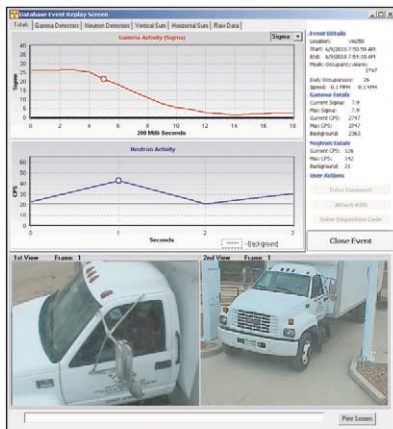




Radiation Alarm and Video Event Notification



Description

TSA Systems has developed a software package to compliment its outstanding array of radiation detection systems. Radiation Alarm and Video Event Notification or RAVEN was designed to both capture and view data and video images relating to a radiological detection incident. Stored sets of data and video can be used in the rapid identification of the method of transportation of radioactive substances. Quick review of the incident can be made by using the on screen controls that allow the user to step through each image and pause whenever necessary. This allows the user to relay any identifying information to response personnel in the field for possible secondary inspection or other interdiction.

RAVEN software has been designed with the user in mind. Local Alarm Stations (LAS) can be configured to only display information that will be useful to the local user. The Central Alarm Station (CAS) can be configured to display much more detailed information that is useful for alarm trending and other data analysis. Multiple LAS or CAS locations can easily be established and through the use of wireless routers these locations can be mobile. Multi-layered password protection will restrict unauthorized access to sensitive data or video and will protect the privacy of innocent individuals.

Graphs of detection levels along with the ability to view which individual detector is displaying the most activity will allow the user to better understand where in a large container the radioactive source may be located. This will save time for personnel doing secondary inspections.

The system controller within the detection pillar is constantly monitored by RAVEN for any changes that might be intentionally or unintentionally made. The CAS operators will be alerted to a parameter change and will be able to view the original as well as the new setting. A view of all the system parameters for each monitored location is displayed side by side to enable the user to better identify a change in any system.

Features

- Graphs and video enable user to identify what caused alarm
- Prioritized alarms to easily identify the most critical
- Archived events easily recalled using query options
- Graphs of background radiation level are available for analysis of the State of Health of the monitor
- Easy workstation configuration to limit access
- Audio annunciation can be tailored to exact site requirements
- System status indicators help users identify fault conditions
- System automatically resumes normal operation after clearing of fault conditions
- Single click to expand video images to full screen for easier analysis
- Alarm comments can be entered in the user's native language

Applications

Applications include any locations where TSA Systems data and video information need to be combined and displayed for alarm assessment and event control. Ports, border crossings, railroad yards, and vehicle weigh stations are just a few of the locations where RAVEN can be used.